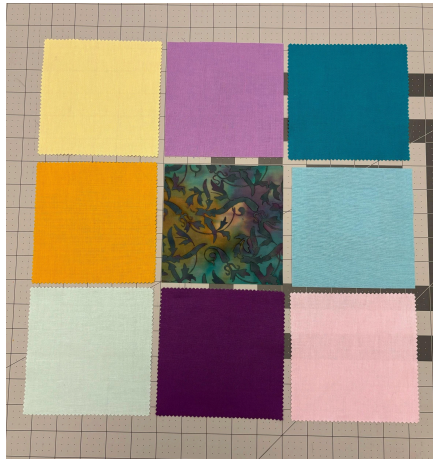


## JUNE 2024: B-S

Ha! Not *that* B-S...it's **Batiks and Solids**!! Let's keep it simple for the last BOM of the year and go with a nine-patch!

I dug into my charm pack of Tula Pink solids and considered cutting them down to 4-½ inches, but it was 7:45 pm and I said 'meh'. Kind of wish I did in retrospect, but Oh well! Those pinked edges are a bit of an annoyance for me; I made do anyway!!



**Please use 5" squares: your batik will go in the middle with coordinating solids all around...EASY!!**



**Use ¼ inch seams to make three rows. [ugh!!! Those pesky pinked edges!!]**

**Press the top and bottom rows outward. Press the middle row towards the batik.**

**Piece the rows to make your beautiful nine-patch!**



**The block should be 14" square, once pieced. This is the part where I wish I had removed all those pinked edges!**

**After a little trimming away, here it is!!**