

MAY 2024: HAIKU

****SPECIAL NOTES FOR THIS MONTH!!**

As I mentioned at the April meeting (in case you weren't there), this is a block I designed and when it all came together, it was a little off. I think it had something to do with my seams and all of the little pieces and whatever!!!

The block was supposed to finish at 12- $\frac{1}{2}$ by 12- $\frac{1}{2}$ but like I said...things got wonky for me. I think the math is all good.

I ended up trimming my block to 12 by 12 inches.

It was agreed upon by the membership that I should not redo my pattern (THANK YOU!!!) and we would 'go with it' as is.

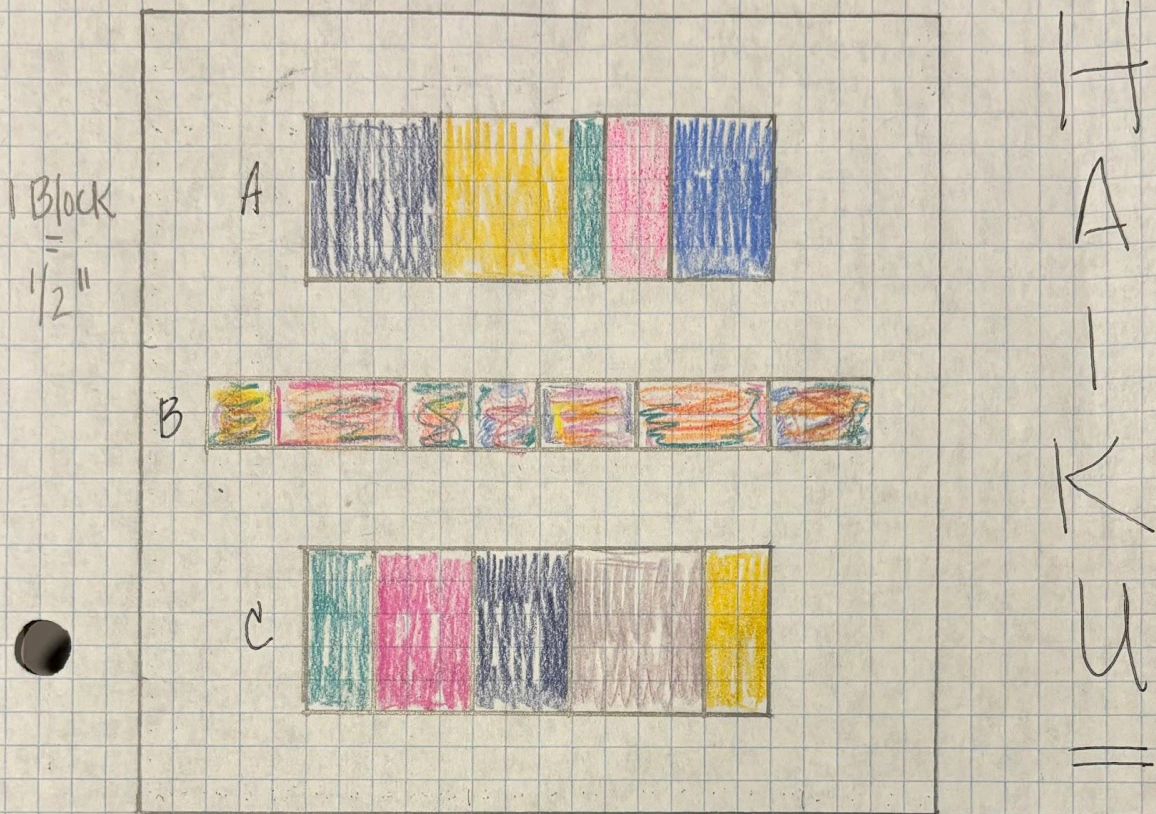
**If you feel the need to trim to 12 by 12...go right ahead!
If you're happy with what you get at the end...awesome!**

The winner can decide what to do in the end, LOL!

Thank you for trying my May BOM!!

You may proceed :) :)

MAY 2024



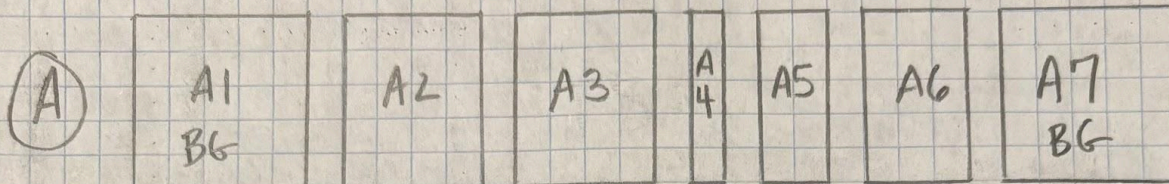
Block is 12" x 12" FINISHED into a quilt.
Your block should measure 12 1/2" x 12 1/2"

- Rows A and C are solids that coordinate
- With Row B patterns / prints
- Background is GRAY

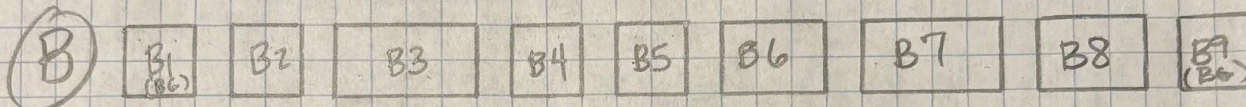
Use 6-10
different solids

CUTS:

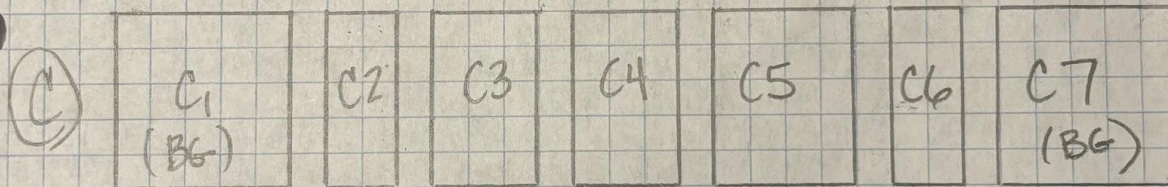
① (BG) 2 x 12 1/2"



② (BG) 2 x 12 1/2"



③ (BG) 2 x 12 1/2"



④ (BG) 2 x 12 1/2"

* 1-4: Background Fabric (GRAY) (4) - 2 x 12 1/2

* A1, A7, C1, C7: Background Fabric (GRAY) (4) - 3 x 3

* B1, B9: Background Fabric (GRAY) (2) - 1 1/2 x 1 1/2

A - five diff. solids | B - seven diff prints | C - five diff solids

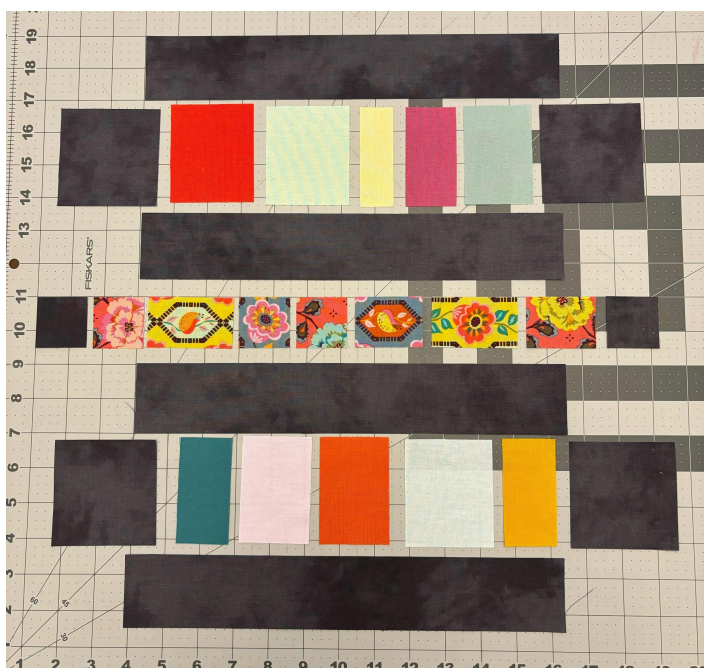
A2 + A3: 2 1/2 x 3 | B2, B4 + B5: 1 1/2 x 1 1/2 | C2 + C6: 1 1/2 x 3

A4: 1 x 3 | B3 + B7: 2 1/2 x 1 1/2 | C3 + C4: 2 x 3

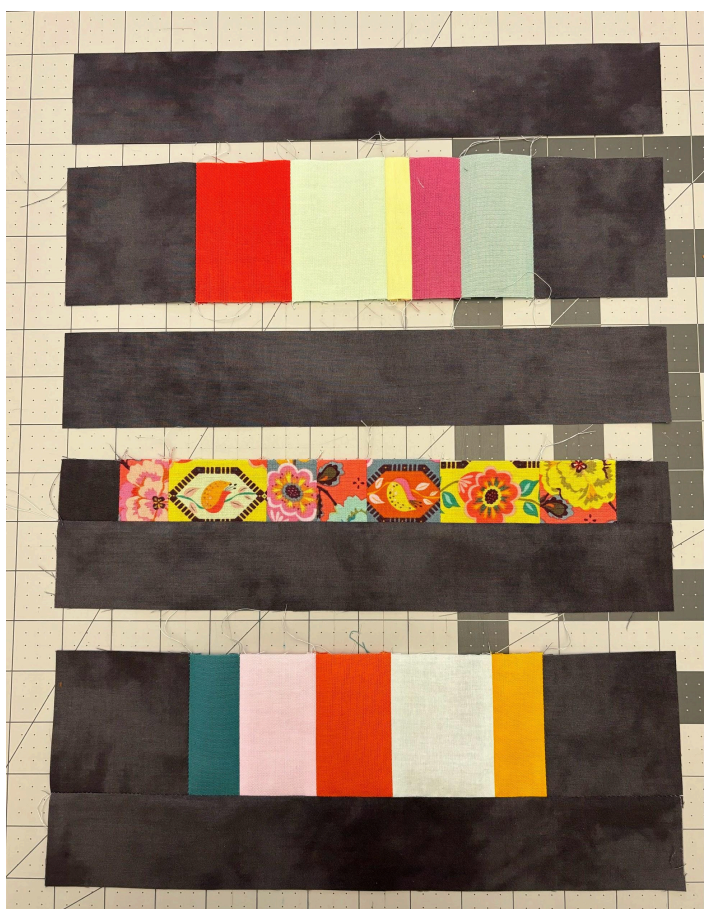
A5: 1 1/2 x 3 | B6 + B8: 2 x 1 1/2 | C5: 2 1/2 x 3

A6: 2 x 3

[Can use solids from "A"]



All laid out...everything seems to be in order



Rows pieced together...still seems like it's all going to work out!!

Remember...if needed, trim to 12 by 12 or leave as is for the winner.

Hope you enjoyed Haiku!