

GARDEN STATE QUILTERS' NEWSLETTER

Sept/Oct
2011

Member, National Quilting Association

Chapter 124



Membership Meetings

Second Monday of the month,
September to June
(Oct. is the third Monday)
Chatham United
Methodist Church
460 Main Street
Chatham, New Jersey
6:45 pm (hospitality)
7:15 pm (business)

Meet the Speaker

Pre-meeting dinner - 5:30pm
Empire Szechuan
258 Main St., Madison

Board Meetings

Tuesday before Meetings
6:45pm
Library of the Chathams

Meeting/Program Changes

Check the website after 3:00pm on the day
of the meeting for program changes or
meeting cancellations, due to unforeseen
circumstances, including inclement weather
gardenstatequilters.com

Membership info/ change of address

Please notify Ginny Koleda at: [membership@
gardenstatequilters.com](mailto:membership@gardenstatequilters.com)

Deadline for November/December newsletter is
October 21st

Send articles to: [newsletter@
gardenstatequilters.com](mailto:newsletter@gardenstatequilters.com)



Message from the President

To our returning and new members,

I hope everyone had a great summer and was able to complete at least one unfinished project or start a new one. The board and committee members are excited about the various activities we have planned for the upcoming year, and we hope that you will join us in sharing your talents with the membership. We were able to see the exceptional talents that our members possess during our 2011 quilt show and we look forward to working with each of you this year to make our guild successful. If you have an idea you would like to share with the guild, please contact one of the board or committee members.

I would like to thank everyone who volunteered to serve on the board, on committees, or "behind the scenes" to share their expertise with the guild. We are also hoping that we can maintain or increase our membership this year with your help.

A special thanks to the board and committee members who are no longer serving on the board. Your contribution was valuable and I hope that you will be able to assist any of the new members who have assumed your role if they need your assistance. Also, thanks to Judy Mason and her "quilting bees" for working tirelessly over the summer, to make quilt tops for our Sunshine committee. The Sunshine committee is the group that coordinates the charitable efforts of the Garden State Quilters' Guild. They make baby quilts, lap quilts, and raffle quilts for delivery to local organizations.

To our new members we welcome you to our quilting family.

"Any day spent quilting is a good day," and "behind every quilter is a huge pile of fabric," so let's continue to use our fabric stashes to create masterpieces.

Working together we can make 2011 – 2012 successful.

-Wannetta



Garden State Quilters Board Members and Committee Chairs

Officers

President

president@
gardenstatequilters.com
Wannetta Phillips

First VP/Bylaws

vp@gardenstatequilters.com
Mary Gruzsecki

VP – Programs*

programs@
gardenstatequilters.com
Becky Dieckmann
Lydia Andersen
JoAnn Lepore
Betsy Vinegrad

Membership

membership@
gardenstatequilters.com
Ginny Koleda

Treasurer

treasurer@
gardenstatequilters.com
Helen Jenys

Secretary

secretary@
gardenstatequilters.com
Betsy Vinegrad



Committees

Quilt Show

show@
gardenstatequilters.com
Aleeda Crawley
Lori Roth

Nominating

Gina Callan Fawcett

Newsletter

newsletter@
gardenstatequilters.com
Wendy Sheridan
Sue Erdreich

Special Project Funding

Co-Chairpersons

Sunshine

sunshine@
gardenstatequilters.com
Leslie Morgan
Alison Gardner

Grants & Scholarships

gs@gardenstatequilters.com
Barbie Vanderfleet-Martin

Block of the Month

bom@
gardenstatequilters.com
Yolanda Fundora
Pam Bakas

Challenge Project

challenge@
gardenstatequilters.com
Sue Erdreich
Lori Roth

Historian

Judy Josephson

Friendship Quilt

friendship@gardenstatequilters.com
Alix Martin

Hospitality

Karen Jack

Open Position

Raffle Quilt

raffle@gardenstatequilters.com
Alicia Bell
Tricia Ertman
Barbie Vanderfleet-Martin

NJ State Guild Representative

Wannetta Phillips

Brownstone Quilt Guild

Representative

Brabara Vedder

Empire Guild Representative

Aleeda Crawley

Publicity

Open

Resources

Ellen Culp

Open

Book Raffle

Mary Ann Gotch
Ellen Bardolf

Website

info@gardenstatequilters.com
Rosetta Hopler
Joan Hughes

Note:

The Garden State Quilters is a non-profit incorporated as of April 1991 and follows state regulations for non-profit organizations.

*All Guild Officers have one vote per office except Programs. Programs has 2 voting positions as stated in the original by-laws.

Membership

Dues for the 2011-2012 membership year are due. If you have not already done so, please make a check for \$45.00 payable to Garden State Quilters Guild at the September meeting.

Thanks, *Ginny*

New Challenge Project

For most of us, getting together with other quilters is one of the main reasons we joined the Guild. Why not take it to the next level, and actually CREATE a quilt with your fellow Guild members? If this sounds like fun, then be sure to sign up for our new Group Quilt Challenge. All the details will be presented at the September meeting!

Sue Erdreich, Challenge Chair

Swap Meet Project

Look for Barbie at the September meeting with the reveal of the first swap meet project.

She will be collecting names and e-mail addresses only in September. Either at the meeting or via e-mail (deadline September 12). You will be notified by e-mail shortly after the meeting who your swap partner will be. We will exchange our handmade items at the January Holiday Party meeting. If you cannot make the January meeting then you can mail your item to the recipient.

Looking forward to the fun and creativity,

Barbie

barbie@vanderfleet-martin.net

Hospitality

For **September**, snacks and treats will be supplied by the GSQ Board Members.

For **October**, people with last names beginning with A-L, please bring a dessert item if you are able.

If anyone has comments or wishes for hospitality, please don't hesitate to speak up.



a neighborhood craft store

Fabulous new & vintage supplies
for sewing and embroidery,
jewelry making and paper crafts.

• Workshops • Birthday Parties • Crafting Groups •

15 Bloomfield Ave, Montclair
Right near Panera

973.337.6759 www.rockpaperscissorsnj.com

Show & Tell

One of the highlights of each guild meeting is the Show & Tell time, when members proudly display the quilts they have made. Our guild is comprised of quilters of all levels, from beginners to professionals, and we enjoy and receive inspiration from each of them. Please, on a night when we have a speaker, limit quilts to one per member.

SUPER SHOW & TELL

This year, at meetings where we do not have a guest speaker, we encourage members to share their quilts with the guild in a "Super Show & Tell", where there is no limit to the number of quilts you can show! Check the calendar to see when the next Super Show & Tell is scheduled.

Sister's Choice Longarm Quilting

Pantographs/Custom/Meandering/Stippling

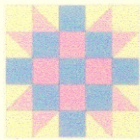
Mary Ames

Phone: 973-933-2371/973-224-9064

11 Gianna Court-Randolph, NJ 07869

Email: sisterschoice@optonline.net

ames4@optonline.net



Brownstone Quilter's Guild has opened up their workshops to us, and ours will be open to their members. Go to the Members Only section of our website for a link to Brownstone's website and info.

We advertise our workshops to other local quilt guilds. We take names of non-members and put them on a waiting list. If a workshop does not fill with the GSQ members, two weeks prior to the workshop date, we will call non-members on the waiting list in the order their names appear. All non-members will be charged an additional amount per workshop.

Meeting Note

As a courtesy to our speakers, no child under the age of 16 will be allowed at a meeting when there is a speaker presenting. Young adults accompanied by their parent wishing to attend our meeting will be required to pay a visitors fee. Exceptions will be addressed at the Board meeting the first Tuesday of the month - one week before the Guild meeting the child/parent wishes to attend. Thank you for your understanding.

Workshop Reminder

Workshop cancellation policy: You will be refunded if you cancel 21 days or more before the workshop or if there is a waiting list. If there is not a waiting list, your money is forfeited unless you find your own replacement.

All workshops begin at 9AM; doors open at approximately 8:40. Travel irons preferred.

THE CITY QUILTER®

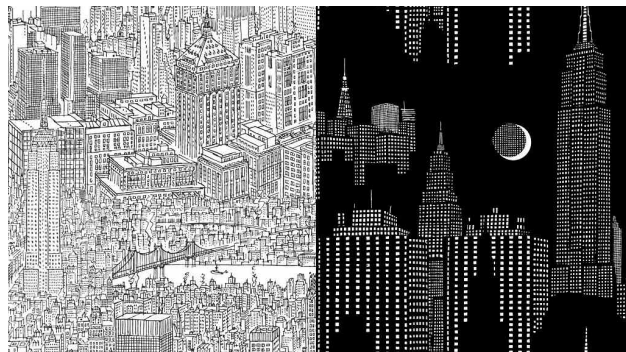
For All Your Quilting Needs

**Bernina and HandiQuilter
Machines & Accessory Sales**

**133 West 25 Street
www.cityquilter.com
212-807-0390**

**Tuesday - Friday, 11 to 7
Saturday, 10 to 6
Sunday, 11 to 5**

**Two CQ-designed
fabrics arrive:
New York Line by
Line-Day & -Night**



Meeting & Workshop Calendar 2011-2012

Monday, September 12, 2011	Kickoff Meeting: SUPER SHOW & TELL
Monday, October 17, 2011	Meeting & Lecture. Speaker: Ranae Merrill, "Spiral Mandala Quilts"
Tuesday, October 18, 2011	WORKSHOP: Ranae Merrill, "Magic Mirror Mandala Quilt"
Monday, November 8, 2011	Meeting & Lecture. Speaker: Jean Biddick, "Architectural Influences in Quiltmaking"
Tuesday, November 9, 2011	WORKSHOP: Jean Biddick, "Piecing Mosaic Tile Designs"
Monday, December 12, 2011	CHARITY EVENT; Badge & Binding Demo, SUPER SHOW & TELL
Monday, January 9, 2012	Meeting and Member Lecture. Pamela Zave; SUPER SHOW & TELL
Monday February 13, 2012	LOVE YOUR GUILD PARTY! Games, prizes! Details in the Jan/Feb newsletter.
Monday, March 12, 2012	Meeting & Lecture, Speaker TBD; Challenge Projects
Monday April 9, 2012	Meeting & Lecture. Speaker, Gwen Marston
Tuesday, April 10, 2012	WORKSHOP: Gwen Marston, "19 th Century Folk Art Appliqué"
Monday, May 8, 2012	Meeting & Lecture: Mary Ellen Krantz, "The Top Ten Ways Quiltmakers Can Use Computers"
Monday, June 11, 2012	STRAWBERRY SUPPER
	Summer Hiatus - Keep on quilting, and see you in September!

Please go to www.gardenstatequilters.com for workshop details

Workshop Registration Form

Workshops are held on the dates listed above from 9am-3pm,
at St. George's Episcopal Church on Ridgewood Road in Maplewood.

Name: _____ Tel: _____

Street: _____ Town: _____ Zip: _____

E-mail: _____

<input type="checkbox"/> 10/18/11	Ranae Merrill	Magic Mirror Mandala Quilt	\$60 members /\$65 non-mem
<input type="checkbox"/> 11/09/11	Jean Biddick	Piecing Mosaic Tile Designs	\$60 members /\$65 non-mem
<input type="checkbox"/> 4/10/11	Gwen Marston	19th Century Folk Art Appliqué	\$60 members /\$65 non-mem
<input type="checkbox"/> 5/09/11	Mary Ellen Krantz	Photo-Inspired Landscape Quilts	\$60 members /\$65 non-mem

Mail this form and check made payable to Garden State Quilters to:
Becky Dieckmann, 6 Winding Way, Madison, NJ 07940

Member News

Diane Colucci

Entered her recently completed quilts at the Vermont and Maine quilt shows. She exhibited the "Autumn Storm" quilt at the Vermont Quilt Fest and "A Star is Born" and "Bear Pause" at the Maine Quilt Show. She won Special Mention Ribbons for the quilts at the Maine show. Congratulations, Diane!



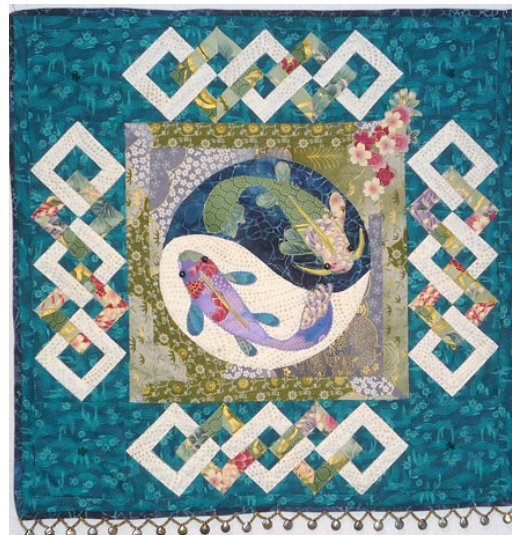
Member News

If you have **Member News** to contribute, email it to: newsletter@gardenstatequilters.com. Please provide as much information as possible.

If you have information for the homepage on our website, please email to rose1951@hotmail.com

Wendy Sheridan

Entered the Hoffman 2011 Challenge for the first time this year. Her quilt "A Moment of Zen" was chosen to be included in the travelling trunk show, and will be touring the country in the "Trunk F" collection until October 2012.



a moment of zen, photo by W Sheridan

YOUR AD HERE

We are accepting advertisements from GSQ members. You can advertise in as many or as few issues as you wish, and you can change ad size for each issue. The newsletter goes out to all members, and is posted on the public area of the GSQ website. Advertising revenue helps offset printing and mailing costs. **Ad deadline for the November/December issue is October 15th.**

Ad Rate Sheet:

Business Card Ad	2" x 3.5" (horizontal or vertical)	\$10/issue
1/4 Page Ad	3.75" w x 4.75" h	\$15/issue
1/2 Page Ad	7.5" w x 4.75" h (horiz) 3.75" w x 9.5" h (vert)	\$30/issue
Full-Page Ad	7.5" w x 9.5" h	\$60/issue

Raffle Quilt Winner

Garden State Quilters' Guild Member Camille Higgins is the winner of the raffle quilt. (She even donated a bold floral that helped with the color direction of the quilt!). Congratulations, Camille!



photo by Ginger Scott

Quilt Show Report

The 2011 quilt show, "Then & Now", was held at the Mennen Arena in Morristown last spring. Many guild members worked very hard to put on a fantastic show, showcasing the talents of the Guild.

The show made a profit, and we were able to donate \$250 to the Jersey Battered Women's Services in Morristown, NJ.

We are starting the advance planning for our next show, to be held in 2013. Watch this space for updates and news.

Help A College Student

We received this email in June, right after our last meeting for the year. Tami needs our help to finish a research paper that is due in November. - ed.

Hello, my name is Tami Oxenrider and I would like to ask your guild for help with a research paper. I am writing a paper on quilting in America for college. The title is "Quilting: is there a comeback". I would appreciate it you could put these questions in your newsletter.

1. Over the past five (5) years would you say that the interest in quilting has decreased, increased or remained the same?
2. How many years have you been quilting?
3. That type of quilts do you like to make – Art quilts or traditional?
4. What size do you regularly make – wall, baby, bed size, table runner or other?
5. About how many quilts do you make per year?
6. Do you quilt your own or take it to a long arm quilter?
7. Do you hand sew/quilt any of your quilts?
8. What would you say the age range of your guild is?
9. What state do you live in?
10. Do you do any quilts for charities?

For the Long arm quilters:

1. Do you quilt for others?
2. Do you have a store front or do you quilt in your home?
3. About how many quilts do you quilt in a month?
4. When would you say the busiest time for quilting is and do you have a cutoff date for Christmas quilts?

You can either mail the answers to:

Tami Oxenrider
502 Providence Drive
Bryant, AR 72022

Or E-mail decox@yahoo.com. Please place 'Quilt Research' in the subject line.

Sunshine and Stashbusting

You may have thought that Sunshine goes really quiet over the summer. That has not been the case this summer. There is an on-going effort to reduce the fabric stash in the storage unit. Judy Mason has been the driving / organizing force for three Bees to cut and use fabric. There will be more activities to make some order and space and create wonderful quilts for charitable giving. We know the need for Sunshine never goes away and if anything grows and grows.

Everyone will have the opportunity to become a Stashbuster this fall. We are pleading with each of you to cut a small quantity of fabric into properly sized pieces to make scrappy quilts. Judy Mason, Barbia vander Vleet-Martin, Ginger Scott and Leslie Morgan met at the Storage Unit one Saturday morning and emptied several boxes of fabric. At check-in for September's meeting, each of us will receive a bag with approximately 1 yard of fabric and instructions for what to cut – all from the Stash. Bring them back to the meeting in October. Sunshine will mix and match the pieces into kits for tops. Here's one example of a quilt made from 2 ½ inch strips in one afternoon.

Meeting Notes

Hospitality 6:45 PM

Business 7:15 PM

Guild Pins - \$5

Membership Lanyard - \$5

September Meeting Checklist

- Hospitality Treats - N-Z
- Block of the Month
- Show and Tell
- Troop Support
- Boutique
- Little Wishes

October Meeting Checklist

- Block of the Month
- Show and Tell
- Troop Support
- Strawberry Supper
- Quilt Show Boutique Overstock Sale

Watch for more Bees in the fall as well.

25 quilts finished in May / June were donated to unwed mothers and more than 50 hats were donated to the NICU at Beth Israel.

We are looking forward to another creative year with Sunshine. Alison and I poured over YouTube videos of "10 min" blocks yesterday, getting ourselves all jazzed up for Sunshine options.

Leslie Morgan & Alison Gardner

Sunshine Stashbusters

In this bag is approximately 1 yard of fabric which we would like you to cut into:

6 ½" squares, 5" squares and/or 2 ½" strips, starting with the largest size. PLEASE cut accurately as your pieces will be combined with those from the rest of the Guild and turned into beautiful scrappy quilts. Return the cut fabrics at the October meeting.



Regional Quilting Events

Quilts: Masterworks from the American Folk Art Museum

Now through October 16, 2011

45 West 53rd Street, New York, NY 10019

www.folkartmuseum.org

Patchwork: from Folk Art to Fine Art

September 14 - December 31, 2011

Newark Museum, 973-596-6613, www.newarkmuseum.org

ArtQuilt Gallery: Explosions In Color

September 9 - October 29, 2011

133 West 25th Street, New York, NY 10001

www.artquiltgallerynyc.com

Quilty Pleasures Newton Quilters' Guild 2011 Show

October 8-9, 2011

Maureen M. Welch Elementary School,
750 New Road, Churchville, PA 18966

www.newtonquiltersguild.org